



# PADEL NEWSLETTER

JUNE 2023



# THIS MONTH'S PADEL WRAP-UP

New padel courts open at Aberdeen Tennis Centre... Avon gets it's first padel court and Smash Padel opens two courts in Bicester! Padium is on the verge of opening eight-courts in the heart of Canary Wharf and a five-court indoor venue, developed by The Padel Hub will be opening in Slough this July.

Thanks to 50 new courts opening in Q1 this year, we're in for a strong year of padel developments across the country. There are now 286 padel courts in Britain and counting... that's 108 venues; a mixture of tennis venues, parks, CITCs, leisure centres, squash clubs, football clubs, golf clubs and dedicated padel-only businesses.

Last weekend saw British players claim wins across the board at the LTA Padel British Tour in Guernsey and GB Men's no1 ranked player Christian Medina Murphy recently competed in the WPT's Saudi Arabia and Egypt tours. Other British players competing on the pro circuit last month included; Sam Jones, Louie Harris, Nik Mohindra, George Weller and Dawn Foxhall.

Tia Norton's American adventure continues as she participates in the ProPadel league. Competing for Las Vegas Smash, her team are currently in second position in the league.

Men's and Women's Senior teams head to Spain to compete at the FIP European Padel Championships from June 12<sup>th</sup> and the LTA prepares to install a pop-up padel court at this year's Formula 1 British Grand Prix at Silverstone.



For the latest articles, [click here](#)

# LTA PADEL BRITISH TOUR

Last weekend saw British players claim wins across the board at the LTA Padel British Tour at Guernsey Padel Club.

The competition in Guernsey was the fourth of seven Grade 1 events to take place across England, Scotland, and the Channel Islands as part of the British Tour, which encompasses the top padel competitions in the UK.

With six of UK's top ten men and five of the top ten women travelling to Guernsey to compete for the £3,500 prize fund, the standard of padel was extremely high. There was British success across the men's and women's competitions with **Francis Langan** and **Sam MacNeil** lifting the title in the men's, and **Aimee Gibson** and **Catherine Rose** succeeding in the women's side of the draw.

For our event summary, including draws and results, [click here](#).



# WOMEN'S PADEL

The LTA's DTAG (Development Tennis Advisory Group) has a specific workstream for padel, which was established shortly after padel was integrated back in 2019. Several sub-groups have since developed to focus on particular areas of padel.

Working towards a gender balanced game and keen to encourage a *padel for everyone* approach, is a sub-group consisting of Yasmin Clarke, Karen Hazard, Libby Fletcher, Nicky Horn, Abi Tordoff, Pep Stonor and Jo Ward. The group have made the following suggestions for venues:

- ✓ Facilitate women's only group sessions.
- ✓ Offer regular/consistent sessions so that women with children can plan ahead.
- ✓ Facilitate women's sessions around school time.
- ✓ Ask what they would like out of the session, don't assume – think player first then sport.
- ✓ Emphasise fun, not competition initially.
- ✓ Keep in mind women may be less confident, less flexible and tend to feel more comfortable in groups. Encourage them to bring their friends to try it out together.
- ✓ Offer coaching, cardio, fun sessions.
- ✓ For stronger players, arrange friendly team matches with other clubs just for women.



# SENIORS PADEL

Up next is the **FIP** Senior European Padel Championships in Spain, June 12-17th at La Nucia in Spain.

The following players will represent the GB team and we wish them the best of luck as they take on the rest of Europe.

## GB Men's Teams selected for FIP Senior European Championships 2023

### Seniors Team

- 50+
- Daren Quilty
  - Drew Warren
  - Gavin Thomson
  - Ahmad Butt
- 45+
- John Leach
  - Grantley Harris
  - Bero Bobus
  - Martin Calvert
- 40+
- Richard Brooks
  - Ben Gudzelak
  - Javier Etayo
  - Ali Anderson

### Super Seniors Team

- 60+
- Nick Holloway
  - Bjorn Schroder
  - Michael Gradon
  - Paul Thomas
- 55+
- Chris Warren
  - John Byrne
  - Tim Webb
  - Mike Jenkins
- 50+
- Sergio Munez
  - Will Wells
  - Paul Coeulle
  - Simon Dickinson

## GB Women's Teams selected for FIP Senior European Championships 2023

### Seniors Team

- 50+
- Helen Crook
  - Dawn Foxhall (Vice Captain)
- 45+
- Libby Fletcher (Captain)
  - Jo Ward
- 40+
- Sarah Lochrie
  - Kerry White
- Reserves:
- Kate Hands
  - Anthea Hunt

### Super Seniors Team

- 60+
- Sally Bickerton
  - Rosie Connell
  - Audrey Henderson
- 55+
- Emma Devenport
  - Sally Fisher (Vice Captain)
- 50+
- Louise Baker
  - Nicky Horn
- Reserve: Karen Hunter
- Captain: Jo Ward



# BRITISH PLAYERS ON TOUR

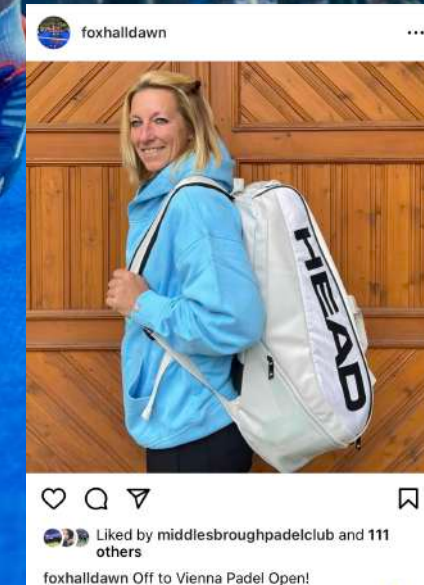
GB Men's no1 ranked player [Christian Medina Murphy](#) recently competed in the WPT's Saudi Arabia and Egypt tours.

Other British players competing on the pro circuit last month included; [Sam Jones](#), [Louie Harris](#), Nik Mohindra, George Weller and Dawn Foxhall.

Several performance players are now training at our overseas training base in Alicante, under the supervision of Matt Stanforth, our newly appointed Padel Performance Manger.

To follow the progress of our top British players, visit their player profiles on the LTA website.

Links at [www.lta.org.uk/padel](http://www.lta.org.uk/padel)



# Britain's Tia Norton set to star in the first Pro Padel League

Tia Norton

British No.1 [Tia Norton](#) was selected to play for team Las Vegas Smash in the inaugural player draft for the 2023 Pro Padel League (PPL) in the USA.

Tia and the Las Vegas franchise has secured a place in the semi-finals, which will be streamed LIVE on YouTube on June 10<sup>th</sup>.

You can watch the live stream [here](#).



**PRO  
PADEL  
LEAGUE**



# COACHING PADEL

The **LTA Padel Instructor** qualification is now being delivered by Coach Development Centres. This means that there will be a proliferation of courses across the UK and throughout the year.

The LTA Instructor qualification entails 4 days' core training, face to face with the Tutor plus one further five-hour Elective workshop, from a choice of two.

The electives, also available as CPD are as follows:

1. **Coaching the Double Glass**
2. **Coaching Kids' Padel**

For more information on padel coaching click [here](#)



Coaches wishing to prepare for the Padel Instructor qualification will need to do a **Padel Instructor Readiness Test**, which can be booked via the LTA Course Search Tool.

The test costs £36 and is carried out remotely/video based.



# COACH ACCREDITATION

If a Padel coach is operating at an LTA Registered Venue (either as a standalone padel venue, or one attached to a registered tennis venue), they should be actively working towards gaining their LTA Accreditation.

At this moment in time, they are able to continue coaching without LTA Accreditation as long as they are considered safe to practice, which means they will need to have DBS, first aid and safeguarding training in place.

**If the padel coach already has a padel qualification from another body, they can apply for their non-LTA padel qualification to be recognised, to enable them to become LTA Accredited.**



## ANNOUNCEMENT

**FROM JANUARY 2024**

**The requirement for Padel coaches to be LTA Accredited will become enforceable from January 2024.** This means that if a Padel coach is not Accredited from that time onwards, they will not be allowed to coach at a registered venue.

The **LTA Padel Instructor** qualification is now being delivered by Coach Development Centres. This means that there will be a proliferation of courses across the UK and throughout the year.

For more information on padel coaching click [here](#)

# PADEL COURTS IN BRITAIN

Get involved in one of the fastest growing sports in the world and book a padel court near you today.

There are close to 300 padel courts in Britain ready and waiting for you, with even more on the way.

Check out our padel court map [here](#) to find your nearest courts and how you can book your next hit with friends and family, a coaching session or play matches.



# QUICK ACCESS LOAN SCHEME - PADEL

LTA's Quick Access Loan Scheme provides interest-free loans to help venues invest in facilities, including the installation of padel courts.

For further information please see the following link to the [Quick Access Loan Scheme \(lta.org.uk\)](https://lta.org.uk/quick-access-loan-scheme)



## PROJECT DEVELOPMENT

The QAL funding framework is as follows-

Scheme	LTA TF investment level	Borrowing term
Outdoor padel Approx. cost per court - £75k	Up to 60% of the project cost	5-7 year repayment period
Covered padel (court and cover) Cost per court - £180k	Up to 60% of the project cost	5-10 year repayment period

If you are looking to develop padel at your venue, or you have any questions please contact [facilityfunding@lta.org.uk](mailto:facilityfunding@lta.org.uk)

On 15<sup>th</sup> June we will be running two webinars; 2pm and 7pm, to introduce and outline the Quick Access Loan scheme and answer any question you may have. If you would like to register for the webinar please see the following [zoom link](#).

# PADEL EXPERIENCE AT THE NTC

## *Experience Padel at the National Tennis Centre!*

This package includes 4-hours of on-court coaching, a tour around Wimbledon, a meal at a local restaurant serving authentic Spanish cuisine and an overnight stay at the NTC.

### **Need more information?**

Email: [ntc.padel@lta.org.uk](mailto:ntc.padel@lta.org.uk)

Tel: 0208 487 7296



For those venues considering padel, the NTC can offer personalised group sessions.

There's also regular sessions for anyone wanting to try padel. Players can also book the padel courts on a pay-and-play basis.

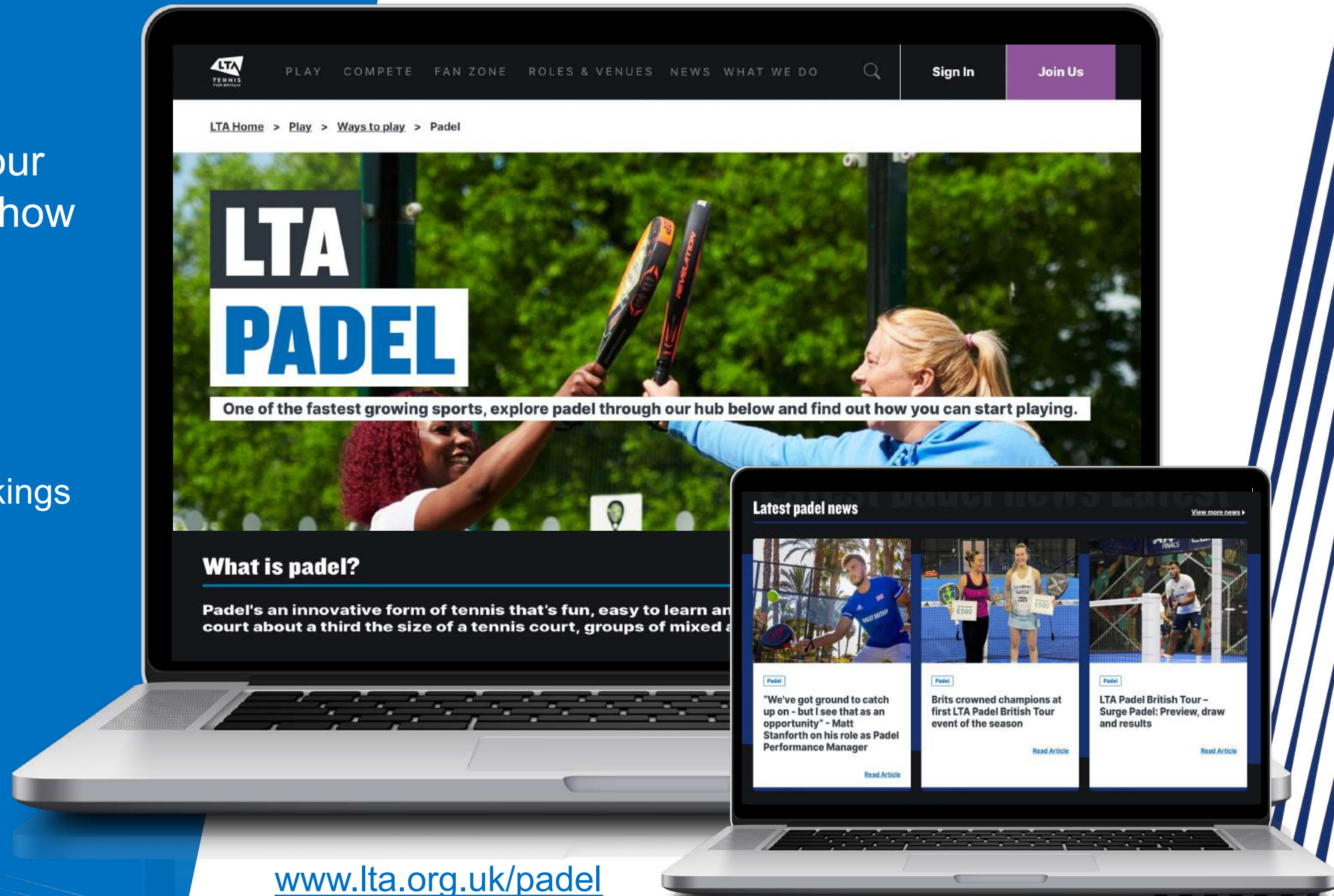
Find out more details [here](#)



# LTA WEBSITE

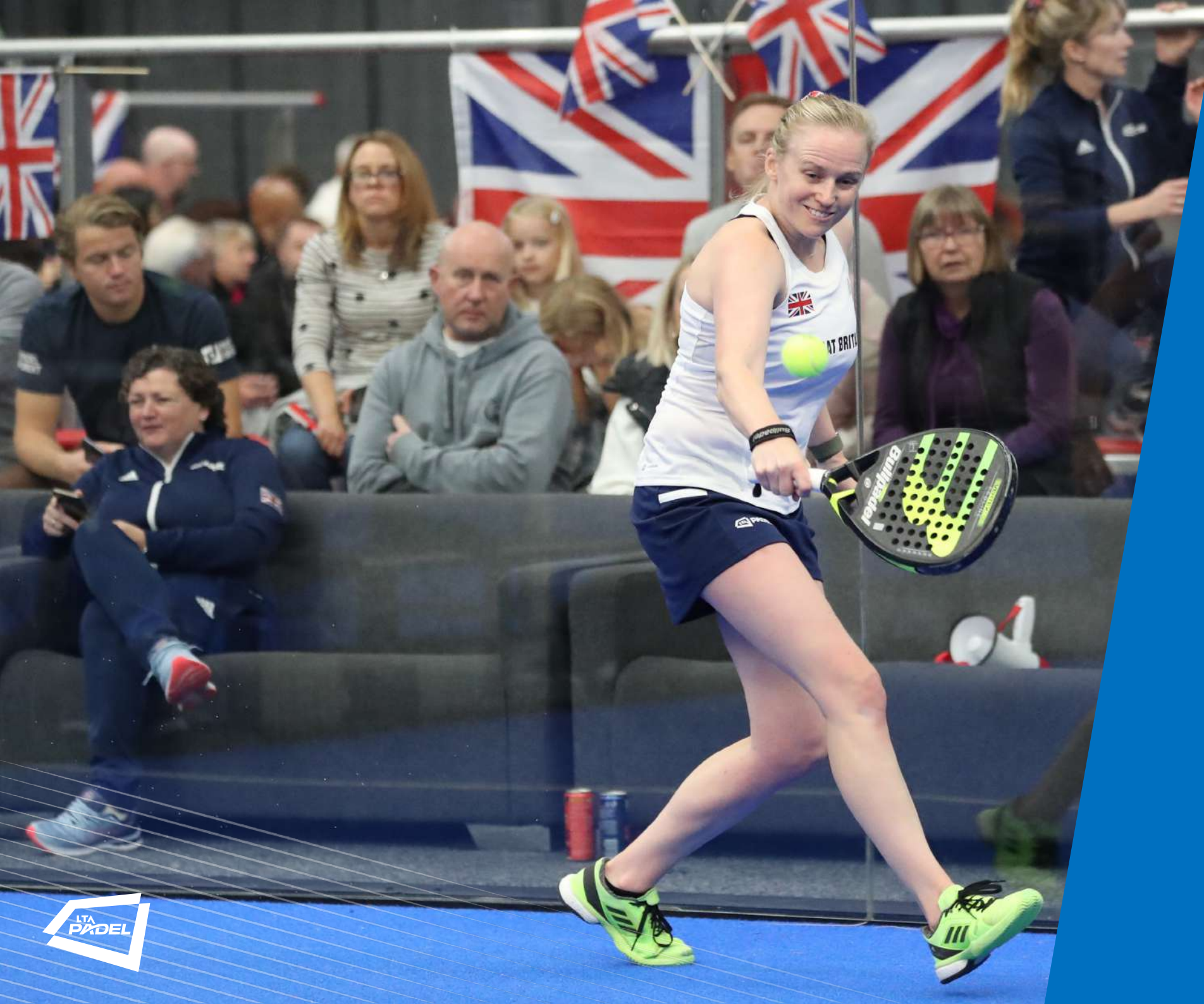
Explore padel through our online hub and find out how you can start playing

- Find a padel court
- Latest news articles
- Padel competitions & rankings
- Coaching courses
- FAQs



[www.lta.org.uk/padel](http://www.lta.org.uk/padel)





# PADEL NEWSLETTER

All content is prepared by the  
Development Tennis Advisory  
Group (DTAG)

If you feel your venue should be featured within the newsletter, or if you have any padel news, please contact Katherine by [email](#).

For general advice and or support on padel, please contact your local LTA representative.