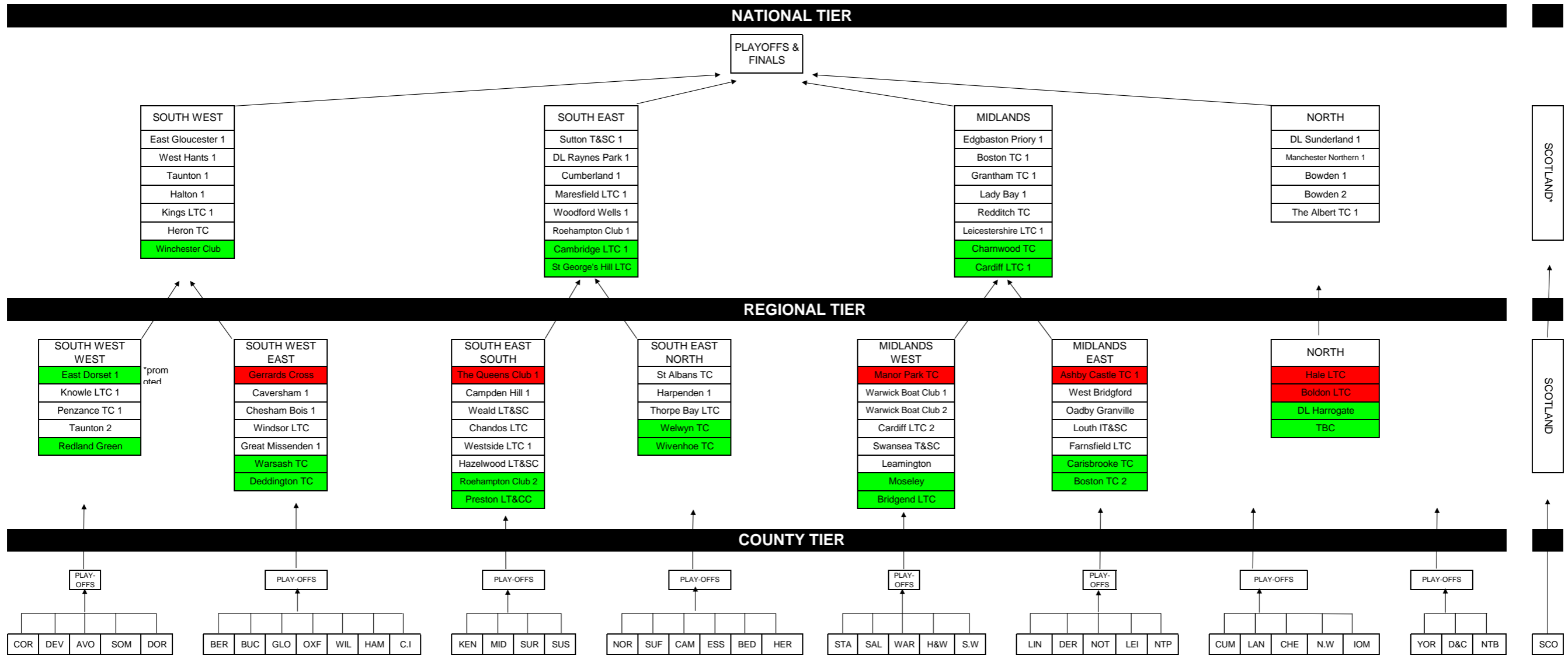


LTA NATIONAL LEAGUE OPEN WOMEN'S STRUCTURE 2024 (Provisional)



Open Structure User Guide

The teams in red below have been relegated to the County tier for the 2021 season.

*The winners from the National League in Scotland will play at home to 3rd place in England/Wales North. The winner qualifies for the National Open Playoffs

Green = Promoted Team

Red = Relegated Team

Royal Berkshire

Wimbledon Club 1

St Neots LTC
WimX Tennis
West Herts & Watford LTC